

**2024  
VCE  
Mathematical Methods  
Year 12  
Trial Examination 1  
Detailed Answers**



**Kilbaha Education**

Quality educational content

**Kilbaha Education (Est. 1978) (ABN 47 065 111 373)**  
**PO Box 3229**  
**Cotham Vic 3101**  
**Australia**

**PayID: 47065111373**  
**Email: [kilbaha@gmail.com](mailto:kilbaha@gmail.com)**  
**Tel: (03) 9018 5376**  
**Web: <https://kilbaha.com.au>**

*All publications from Kilbaha Education are digital and are supplied to the purchasing school in both WORD and PDF formats with a school site licence to reproduce for students in both print and electronic formats.*

### IMPORTANT COPYRIGHT NOTICE

- This material is copyright. Subject to statutory exception and to the provisions of the relevant collective licensing agreements, no reproduction of any part may take place without the written permission of Kilbaha Education.
- The contents of this work are copyrighted. Unauthorised copying of any part of this work is illegal and detrimental to the interests of the author.
- For authorised copying within Australia please check that your institution has a licence from <http://copyright.com.au>. This permits the copying of small parts of the material, in limited quantities, within the conditions set out in the licence.

Reproduction and communication for educational purposes The Australian Copyright Act 1968 (the Act) allows a maximum of one chapter or 10% of the pages of this work, to be reproduced and/or communicated by any educational institution for its educational purposes provided that educational institution (or the body that administers it) has given a remuneration notice to Copyright Agency Limited (CAL) under the Act.

For details of the CAL licence for educational institutions contact CAL,  
Email: [info@copyright.com.au](mailto:info@copyright.com.au)

- All of these pages must be counted in Copyright Agency Limited (CAL) surveys
- This file must not be uploaded to the Internet.

### These suggested answers have no official status.

While every care has been taken, no guarantee is given that these answers are free from error. Please contact us if you believe you have found an error.

### CAUTION NEEDED!

All Web Links when created linked to appropriate Web Sites. Teachers and parents must always check links before using them with students to ensure that students are protected from unsuitable Web Content. Kilbaha Education is not responsible for links that have been changed in this document or links that have been redirected.

**Kilbaha Education (Est. 1978) (ABN 47 065 111 373)**  
**PO Box 3229**  
**Cotham Vic 3101**  
**Australia**

**PayID: 47065111373**  
**Email: [kilbaha@gmail.com](mailto:kilbaha@gmail.com)**  
**Tel: (03) 9018 5376**  
**Web: <https://kilbaha.com.au>**

**Question 1**

a.  $f(x) = \log_e \left( \sqrt{(x^3+1)} \right) = \log_e \left( (x^3+1)^{\frac{1}{2}} \right) = \frac{1}{2} \log_e (x^3+1)$

$$f'(x) = \frac{1}{2} \frac{\frac{d}{dx}(x^3+1)}{(x^3+1)} = \frac{3x^2}{2(x^3+1)} \quad \text{M1}$$

$$f'(2) = \frac{3 \times 4}{2(8+1)}$$

$$f'(2) = \frac{2}{3} \quad \text{A1}$$

b.  $\frac{d}{dx} \left( \frac{x}{\sqrt{4x+9}} \right) = \frac{px+r}{(4x+9)^n}$  using the quotient rule

$$u = x, \quad v = \sqrt{4x+9} = (4x+9)^{\frac{1}{2}}$$

$$\frac{du}{dx} = 1 \quad \frac{dv}{dx} = 4 \times \frac{1}{2} \times (4x+9)^{-\frac{1}{2}} = \frac{2}{\sqrt{4x+9}} \quad \text{M1}$$

$$\frac{d}{dx} \left( \frac{x}{\sqrt{4x+9}} \right) = \frac{\sqrt{4x+9} - \frac{2x}{\sqrt{4x+9}}}{4x+9}$$

$$= \frac{4x+9 - 2x}{\sqrt{4x+9}(4x+9)} = \frac{2x+9}{(4x+9)^{\frac{3}{2}}}, \quad p=2, \quad q=9, \quad n=\frac{3}{2} \quad \text{A1}$$

**Question 2**

a.  $3^{x^2+6x} = \frac{1}{243} = 3^{-5}$

$$x^2 + 6x = -5$$

$$x^2 + 6x + 5 = 0$$

$$(x+5)(x+1) = 0$$

$$x = -5, -1 \quad \text{A1}$$

b.  $\log_2(x^2 + 4\sqrt{2}) + \log_2(x^2 - 4\sqrt{2}) = 5$

$$\log_2 \left( (x^2 + 4\sqrt{2})(x^2 - 4\sqrt{2}) \right) = 5$$

$$(x^2 + 4\sqrt{2})(x^2 - 4\sqrt{2}) = 2^5 \quad \text{M1}$$

$$x^4 - 32 = 32$$

$$x^4 = 64, \quad x^2 = 8$$

$$x = \pm 2\sqrt{2} \quad \text{A1}$$

**Question 3**

$$(1) \quad 2ax - 2by = 5 \quad \Rightarrow \quad 2by = 2ax - 5$$

$$(2) \quad (1-3b)x + 12y = 2 - 4b \quad \Rightarrow \quad 12y = (3b-1)x + 2 - 4b$$

$$(1) \quad y = \frac{ax}{b} - \frac{5}{2b} \quad (2) \quad y = \frac{(3b-1)x}{12} + \frac{1-2b}{6}$$

for an infinite number of solutions the gradients and the y-intercepts are both equal, so

$$(3) \quad \frac{a}{b} = \frac{3b-1}{12} \quad (4) \quad -\frac{5}{2b} = \frac{1-2b}{6} \quad \text{M1}$$

$$(3) \quad a = \frac{b(3b-1)}{12} \quad (4) \quad -30 = 2b(1-2b) = 2b - 4b^2$$

$$4b^2 - 2b - 30 = 0$$

$$2b^2 - b - 15 = 0 \quad \text{M1}$$

$$(2b+5)(b-3) = 0$$

$$b = 3 \quad a = \frac{3(9-1)}{12} = 2, \quad \text{or} \quad b = -\frac{5}{2} \quad a = \frac{-\frac{5}{2}\left(-\frac{15}{2}-1\right)}{12} = -\frac{5}{2} \times \frac{-17}{2} \times \frac{1}{12} = \frac{85}{48}$$

an infinite number of solutions when  $a = 2, b = 3$  or  $a = \frac{85}{48}, b = -\frac{5}{2}$  A1

**Question 4**

$$n = 6, \quad \hat{P} = \frac{X}{n} = \frac{X}{6} \quad X \stackrel{d}{=} Bi(n=6, p=?)$$

$$\Pr\left(\hat{P} = \frac{1}{3}\right) = \Pr(X = 2) = \Pr\left(\hat{P} = \frac{1}{2}\right) = \Pr(X = 3)$$

$$\Pr(X = 2) = \binom{6}{2} p^2 (1-p)^4 = \Pr(X = 3) = \binom{6}{3} p^3 (1-p)^3 \quad \text{A1}$$

$$\frac{6 \times 5}{2} p^2 (1-p)^4 - \frac{6 \times 5 \times 4}{3 \times 2} p^3 (1-p)^3 = 0 \quad \text{M1}$$

$$5p^2(1-p)^3 [3(1-p) - 4p] = 5p^2(1-p)^3(3-7p) = 0$$

$$\text{since } 0 < p < 1, \quad p = \frac{3}{7}, \quad X \stackrel{d}{=} Bi\left(n=6, p = \frac{3}{7}\right)$$

$$\Pr(\hat{P} = 1) = \Pr(X = 6) = \binom{6}{6} \left(\frac{3}{7}\right)^6 \left(\frac{4}{7}\right)^0 = \left(\frac{3}{7}\right)^6, \quad a = 3, \quad b = 7, \quad n = 6 \quad \text{A1}$$

**Question 5**

$$f(x) = \begin{cases} \sqrt{5-x^2}, & x \leq 2 \\ ax^2 + bx, & x > 2 \end{cases}, \quad \text{let } g(x) = ax^2 + bx$$

Since the function is continuous at  $x = 2$ ,

$$f(2) = 1 = g(2) \Rightarrow (1) \quad 4a + 2b = 1 \quad \text{A1}$$

Since the join is smooth, the gradients are also equal.

$$f'(x) = \frac{d}{dx}(\sqrt{5-x^2}) = \frac{-x}{\sqrt{5-x^2}}$$

$$g'(x) = 2ax + b \quad \text{M1}$$

$$f'(2) = -2 = g'(2) \Rightarrow (2) \quad 4a + b = -2$$

$$(1) - (2) \quad b = 3, \quad 4a = -5, \quad a = -\frac{5}{4} \quad \text{A1}$$

**Question 6**

$$y = f'(x) = 5 \sin\left(\frac{x}{2}\right) + me^{-2x} + 4$$

at the origin the gradient is zero,  $f'(0) = 0$

$$0 = 5 \sin(0) + me^0 + 4 = m + 4 = 0, \quad \text{A1}$$
$$m = -4$$

$$y = f(x) = \int \left( 5 \sin\left(\frac{x}{2}\right) - 4e^{-2x} + 4 \right) dx \quad \text{A1}$$

$$y = f(x) = -10 \cos\left(\frac{x}{2}\right) + 2e^{-2x} + 4x + c$$

$$f(0) = 0, \quad 0 = -10 \cos(0) + 2e^0 + c = -8 + c, \quad \text{A1}$$
$$c = 8$$

$$y = f(x) = -10 \cos\left(\frac{x}{2}\right) + 2e^{-2x} + 4x + 8$$

**Question 7**

**a.**  $2\sin^2(2x) + \cos(2x) - 1 = 0$   
 $2(1 - \cos^2(2x)) + \cos(2x) - 1 = 0$   
 $2 - 2\cos^2(2x) + \cos(2x) - 1 = 0$   
 $-2\cos^2(2x) + \cos(2x) + 1 = 0$   
 $2\cos^2(2x) - \cos(2x) - 1 = 0$   
 $(2\cos(2x) + 1)(\cos(2x) - 1) = 0$

M1

$\cos(2x) = -\frac{1}{2}, \quad \cos(2x) = 1$

A1

$2x = 2n\pi \pm \cos^{-1}\left(-\frac{1}{2}\right), \quad 2x = 2n\pi \pm \cos^{-1}(1)$

$2x = 2n\pi \pm \frac{2\pi}{3}, \quad 2x = 2n\pi \pm 0$

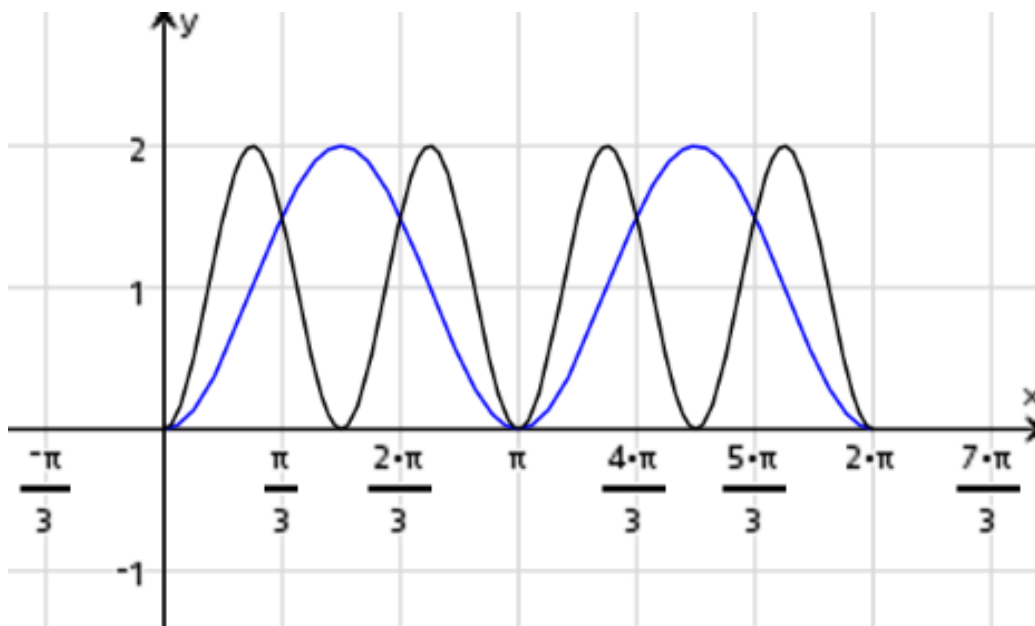
$x = \frac{\pi}{3}(3n \pm 1), \quad x = n\pi \quad n \in \mathbb{Z}.$

A1

**b.** The two graphs intersect at  $x = 0, \frac{\pi}{3}, \frac{2\pi}{3}, \pi, \frac{4\pi}{3}, \frac{5\pi}{3}, 2\pi$  from **a.**

$y_1 = 2\sin^2(2x) \quad y_2 = 1 - \cos(2x)$  has a period of  $\pi$

G2



$2\sin^2(2x) < 1 - \cos(2x), \quad \frac{\pi}{3} < x < \frac{2\pi}{3}, \quad \frac{4\pi}{3} < x < \frac{5\pi}{3}$

$\left(\frac{\pi}{3}, \frac{2\pi}{3}\right) \cup \left(\frac{4\pi}{3}, \frac{5\pi}{3}\right)$

A1

**Question 8**

a. completing the square

$$h(x) = 6 + 3x - x^2 = -\left(x^2 - 3x + \frac{9}{4}\right) + 6 + \frac{9}{4} = \frac{33}{4} - \left(x - \frac{3}{2}\right)^2$$

$$\text{range } h = \left(-\infty, \frac{33}{4}\right]$$

$$f(x) = \log_e(x-2) \text{ domain } x-2 > 0 \Rightarrow x > 2, \text{ range } R$$

	$f(x)$	$h(x)$
domain	$(2, \infty)$	$R$
range	$R$	$\left(-\infty, \frac{33}{4}\right]$

Since range  $h \not\subseteq$  domain  $f$ , so  $f \circ h(x)$  does not exist.

A1

b. solving  $g(x) = 6 + 3x - x^2 = 2$

$$\Rightarrow x^2 - 3x - 4 = 0$$

$$(x-4)(x+1) = 0$$

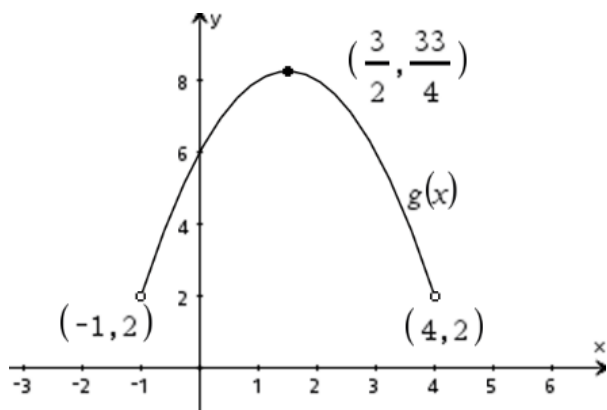
$$\Rightarrow x = -1, 4$$

M1

now  $g(-1) = g(4) = 2$ ,  $g\left(\frac{3}{2}\right) = \frac{33}{4}$ , so if we now restrict the domain of  $g$ ,

as  $D = (-1, 4) = \text{domain } f \circ g(x)$  and the range of  $g = \left(2, \frac{33}{4}\right]$

A1



so range  $g \subseteq$  domain  $f$ , so now  $f \circ g(x)$  exist.

$$f \circ g(x) = f(g(x)) = f(6 + 3x - x^2) = \log_e(6 + 3x - x^2 - 2)$$

$$f \circ g(x): (-1, 4) \rightarrow R, \quad f \circ g(x) = \log_e(4 + 3x - x^2) = \log_e((4-x)(x+1))$$

A1

**Question 9**

The two  $y$  values are equal at  $x = b$  so that (1)  $\sin(b) = \sin(b - \alpha) + c$

$$y = \sin(x), \quad \frac{dy}{dx} = \cos(x) \quad \text{and} \quad y = \sin(x - \alpha) + c, \quad \frac{dy}{dx} = \cos(x - \alpha)$$

The gradients are also equal at  $x = b$  so that (2)  $\cos(b) = \cos(b - \alpha)$  A1

square (1)  $\sin^2(b) = \sin^2(b - \alpha) + 2c \sin(b - \alpha) + c^2$

square (2)  $\cos^2(b) = \cos^2(b - \alpha)$  now add M1

$$\sin^2(b) + \cos^2(b) = \sin^2(b - \alpha) + \cos^2(b - \alpha) + 2c \sin(b - \alpha) + c^2$$

$$1 = 1 + 2c \sin(b - \alpha) + c^2$$

$$2c \sin(b - \alpha) + c^2 = c(2 \sin(b - \alpha) + c) = 0$$

$$c = -2 \sin(b - \alpha) = 2 \sin(\alpha - b) \quad \text{since } c > 0 \text{ and } 0 < b < \alpha < \frac{\pi}{2} \quad \text{M1}$$

from (1)  $\sin(b) = \sin(b - \alpha) + c = \sin(b - \alpha) - 2 \sin(b - \alpha)$

$$\sin(b) = -\sin(b - \alpha) = \sin(\alpha - b)$$

$$b = \alpha - b$$

$$2b = \alpha$$

$$b = \frac{\alpha}{2}$$

$$c = 2 \sin\left(\alpha - \frac{\alpha}{2}\right)$$

$$c = 2 \sin\left(\frac{\alpha}{2}\right) \quad \text{A1}$$



**Question 10**

**a.i.** 
$$f(x) = \begin{cases} \frac{a}{(2x+1)^2} & 1 \leq x \leq 4 \\ 0 & \text{elsewhere} \end{cases}$$

since it is a probability density function the total area under the curve is 1.

$$\int_1^4 \frac{a}{(2x+1)^2} dx = 1$$

A1

$$a \left[ -\frac{1}{2(2x+1)} \right]_1^4 = 1$$

$$a \left( -\frac{1}{18} + \frac{1}{6} \right) = \frac{a(3-1)}{18} = 1$$

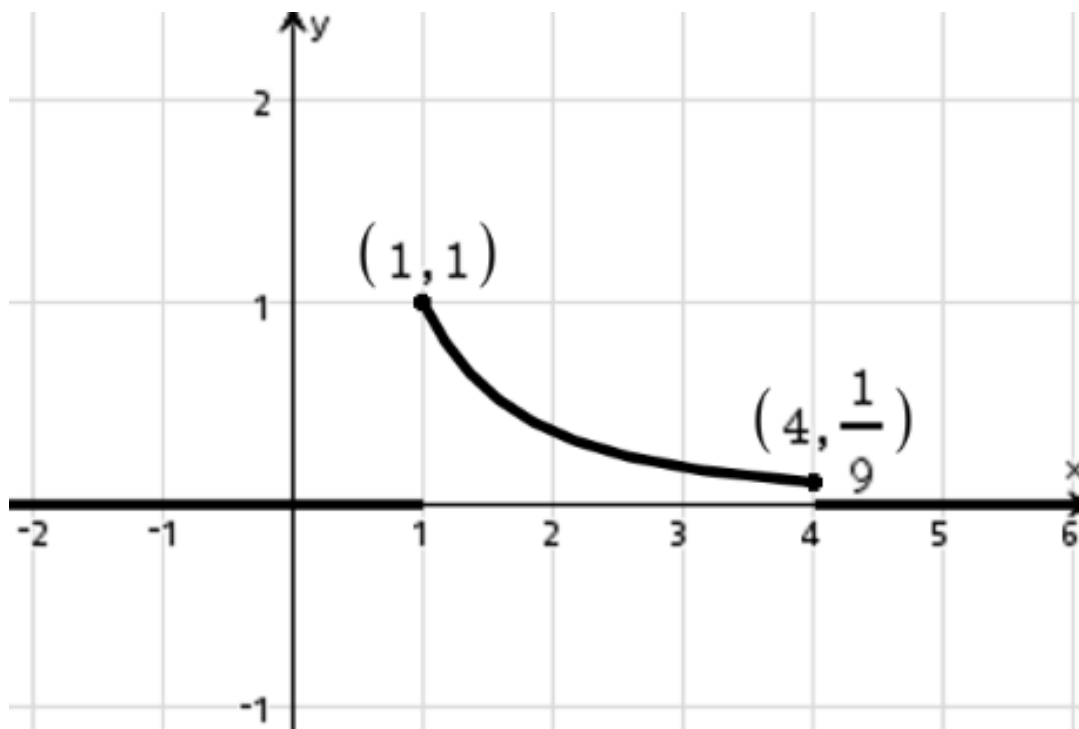
M1

$$a = 9$$

$$f(x) = \begin{cases} \frac{9}{(2x+1)^2} & 1 \leq x \leq 4 \\ 0 & \text{elsewhere} \end{cases}$$

**ii.**  $f(1) = 1, \quad f(4) = \frac{1}{9}$  the graph is part of a truncus graph

G1



$$\text{b. } g(y) = \begin{cases} \frac{b}{2y+1} & 1 \leq y \leq 4 \\ 0 & \text{elsewhere} \end{cases}$$

since it is a probability density function the total area under the curve is 1.

$$\int_1^4 \frac{b}{2y+1} dy = 1$$

$$b \left[ \frac{1}{2} \log_e(2y+1) \right]_1^4 = 1$$

$$\frac{b}{2} (\log_e(9) - \log_e(3)) = \frac{b}{2} \log_e(3) = 1$$

$$b = \frac{2}{\log_e(3)}$$

A1

$$E(Y) = \frac{2}{\log_e(3)} \int_1^4 \frac{y}{2y+1} dy$$

$$E(Y) = \frac{1}{\log_e(3)} \int_1^4 \left( \frac{2y}{2y+1} \right) dy = \frac{1}{\log_e(3)} \int_1^4 \left( \frac{2y+1-1}{2y+1} \right) dy$$

M1

$$E(Y) = \frac{1}{\log_e(3)} \int_1^4 \left( 1 - \frac{1}{2y+1} \right) dy$$

$$= \frac{1}{\log_e(3)} \left[ y - \frac{1}{2} \log_e(2y+1) \right]_1^4$$

$$= \frac{1}{\log_e(3)} \left( 4 - \frac{1}{2} \log_e(9) - 1 + \frac{1}{2} \log_e(3) \right) = \frac{1}{\log_e(3)} \left( 3 - \frac{1}{2} \log_e(3) \right)$$

A1

$$= \frac{3}{\log_e(3)} - \frac{1}{2}, \quad p=3, \quad q=-\frac{1}{2}$$

A1

**End of detailed answers for the  
2024 Kilbaha VCE Mathematical Methods Trial Examination 1**

**Kilbaha Education (Est. 1978) (ABN 47 065 111 373)**  
**PO Box 3229**  
**Cotham Vic 3101**  
**Australia**

**PayID: 47065111373**  
**Email: [kilbaha@gmail.com](mailto:kilbaha@gmail.com)**  
**Tel: (03) 9018 5376**  
**Web: <https://kilbaha.com.au>**